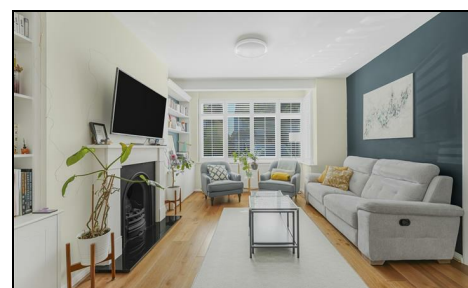
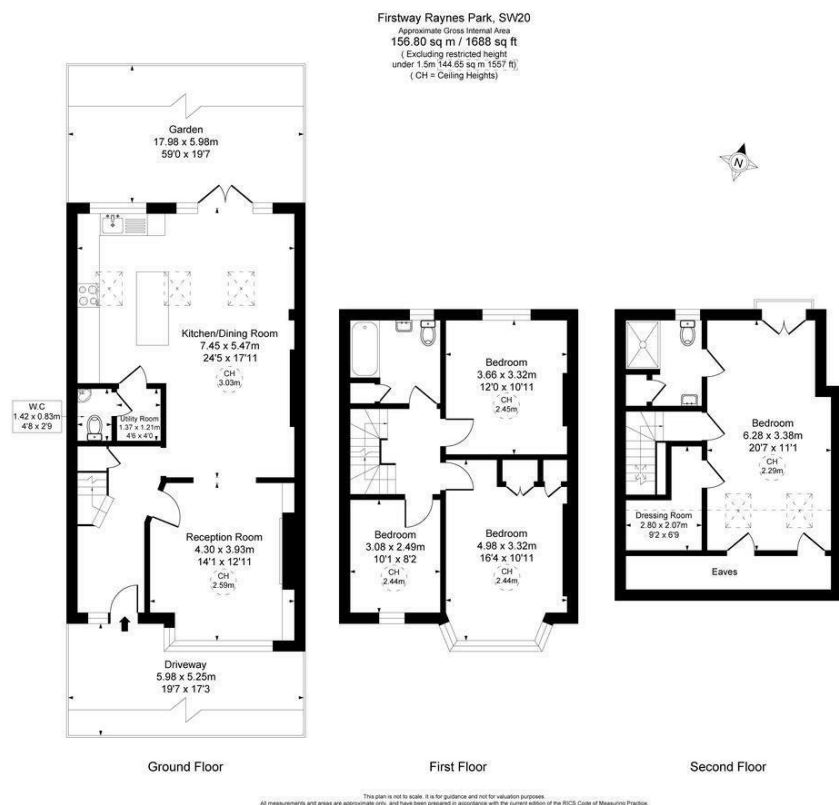


Firstway Raynes Park, SW20 0JD

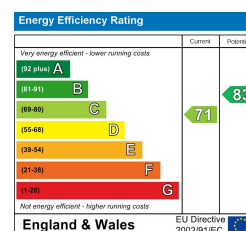
£1,100,000 Freehold



This is a fantastic 1,688 sqft/156.8 sqm FOUR DOUBLE BEDROOM, TWO BATHROOM fully extended 1930's Blay House with a superb 59'ft garden and off street parking that is perfectly located on a central, yet secluded cul de sac only 0.1 Mile from Raynes Park Station and High Street. There is a spacious entrance hall with understairs storage, a large reception room with plantation shutters and an ornate fireplace, a fabulous, extended kitchen/dining/family room with bi folding doors, utility room and downstairs W.C, three double bedrooms and a family bathroom on the first floor and a stunning principal bedroom with en-suite.



- Four Double Bedroom - Two Bathroom
- 1,688 sqft/156.8 sqm Fully Extended 1930's "Blay" House
- Centrally Located Cul De Sac only 0.1 Mile to Station and High Street
- Fabulous Sized Principal Bedroom with En-Suite
- Spacious Reception Room with Plantation shutters and Ornate Fireplace
- Stunning Kitchen/Dining/Family Room with bi fold doors
- Utility Room and Downstairs W.C
- Beautiful 59ft rear garden - Off Street Parking to Front
- Council Tax Band - F
- EPC Rating - C



For Free Mortgage Quote and Best Mortgage Rates, call Ellisons Mortgage Advisor on 0208 944 9595



Although these particulars are believed to be correct, their accuracy is not guaranteed and they do not form part of any contract.

**Celebrating 30 years
of successful Sales and
Lettings in Merton**

